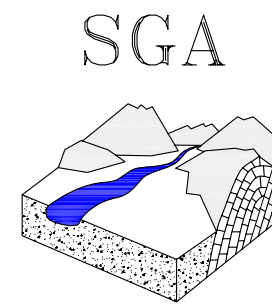


SGA STUDIO GEOLOGICO ASSOCIATO
 Dott.GeoL.Alessandro Onorati, Dott.GeoL.Marcello Maccari
 viale G.Matteotti 12, 62027 SAN SEVERINO MARCHE
 telefono 0733-645150 - fax 0733-646259 e-mail: sgageol@tin.it



Geologia ambientale e difesa del suolo
 Geologia tecnica - Ricerche idriche

COMUNE DI
**CASTELSANTANGELO
 SUL NERA**
 PROVINCIA DI MACERATA

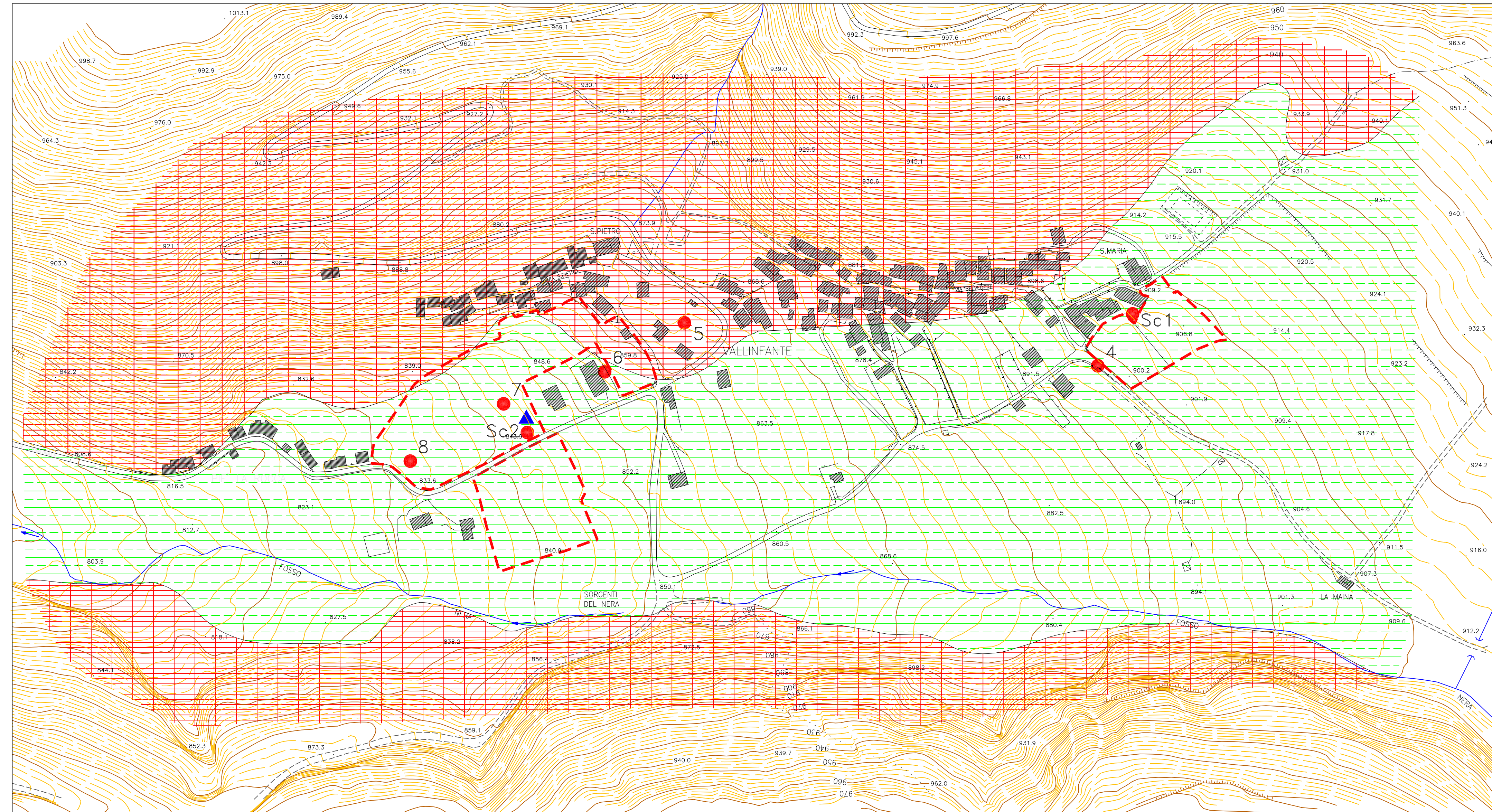
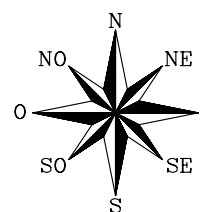
PIANO REGOLATORE GENERALE
 CON ADEGUAMENTO AL P.P.A.R.

TAV. **CARTA DELLE PENALITA'**
3.5 **AI FINI EDIFICATORI**
VALLINFANTE

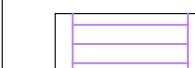

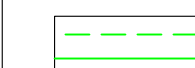




Dott.GeoL. Marcello Maccari

Dott.GeoL. Alessandro Onorati

SGA Elaborazione, digitalizzazione e plottaggio a cura di:
 SGA STUDIO GEOLOGICO ASSOCIATO
 Dott.GeoL.Alessandro Onorati, Dott.GeoL.Marcello Maccari
 viale G.Matteotti 12, 62027 SAN SEVERINO MARCHE
 AutoCAD Map2000 Licenza d'uso n.640-00826517
 Diritti di copia riservati



LEGENDA

-  PENALITA' MASSIMA
-  PENALITA' ALTA
-  PENALITA' MEDIA
-  PENALITA' BASSA
-  Area da urbanizzare
-  1 Sondaggio geognostico
-  Prova penetrometrica